

BIOLOGY

Chapter one

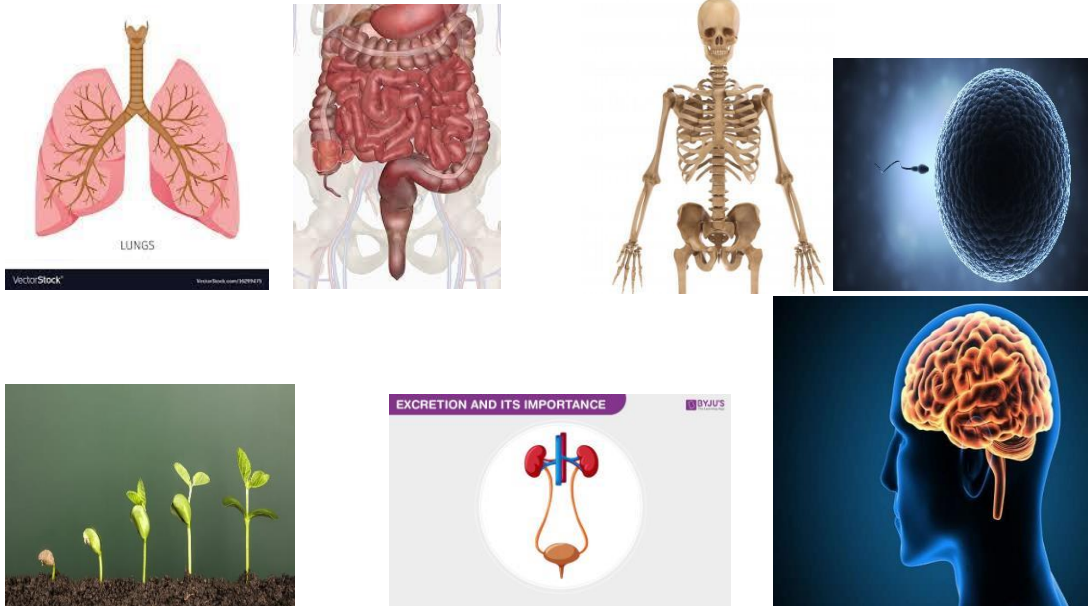
1. In your groups, study the figure below and answer the questions that follow



- i. Identify the different careers/professions in the figure above.
- ii. How do the identified careers relate with the different branches of biology?

BIOLOGY

2. Group the following structures into the different life processes



- Identify the life process involving the structures in the figure A,B,C,D, E,F and G
- How important is each structure in the process identified

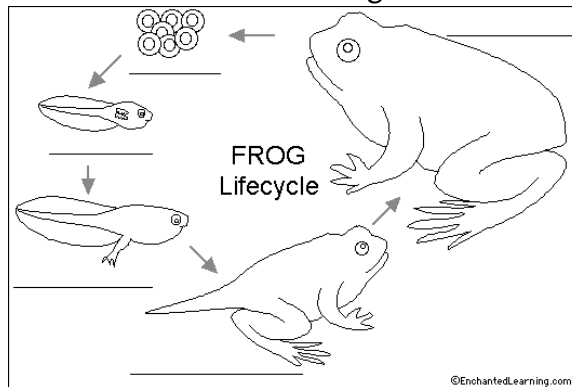
3. Study the organisms below



- Identify the differences between the two figures regarding the life processes

BIOLOGY

4. Identify the life processes shown in the drawing below

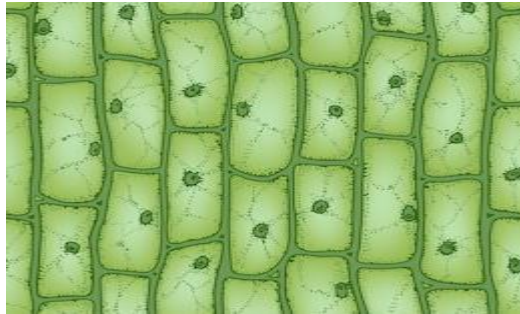


i. How do the life process help the organism in life

BIOLOGY

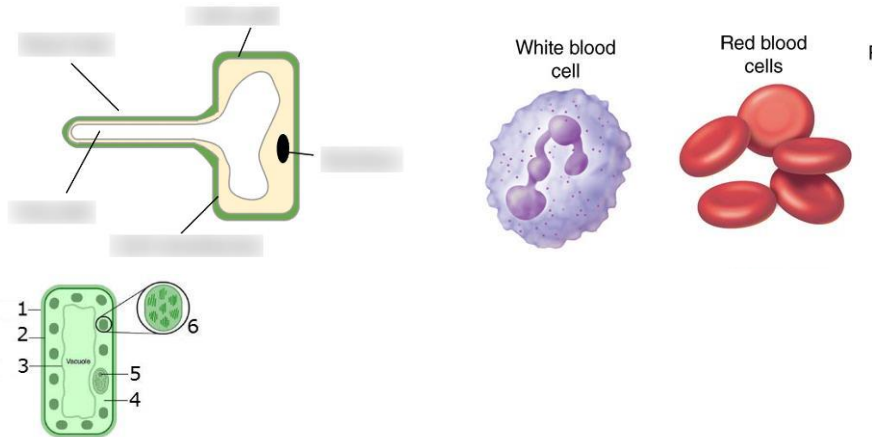
Chapter 2

1. The figure below shows cells observed under a microscope



- i. Identify the organism from which the above cells were extracted was observed in the microscope.
- ii. Give a reason for the answer in (i) above
- iii. How many cells are complete?
- iv. Draw out one cell from the figure above and label it.

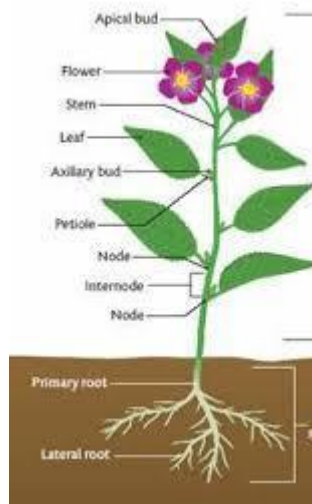
2. Study the drawings below



- i. State any special features seen in the above cells

BIOLOGY

3. Below is a drawing of flowering plant



- a. From the drawings, identify the following
 - i. Systems
 - ii. Organs
- b. where on the plant could the two tissues be originating
- c. identify the life processes that link to the plant tissues mentioned